

1 Master Plan
DA01-02 Scale: 1:2500

fencing - Class 10b
fencing - type 01
solid colorbond 'Wallaby' fencing
fencing - type 02
steel mesh, black PVC coated
fencing - type 03
typical agricultural paddock fencing

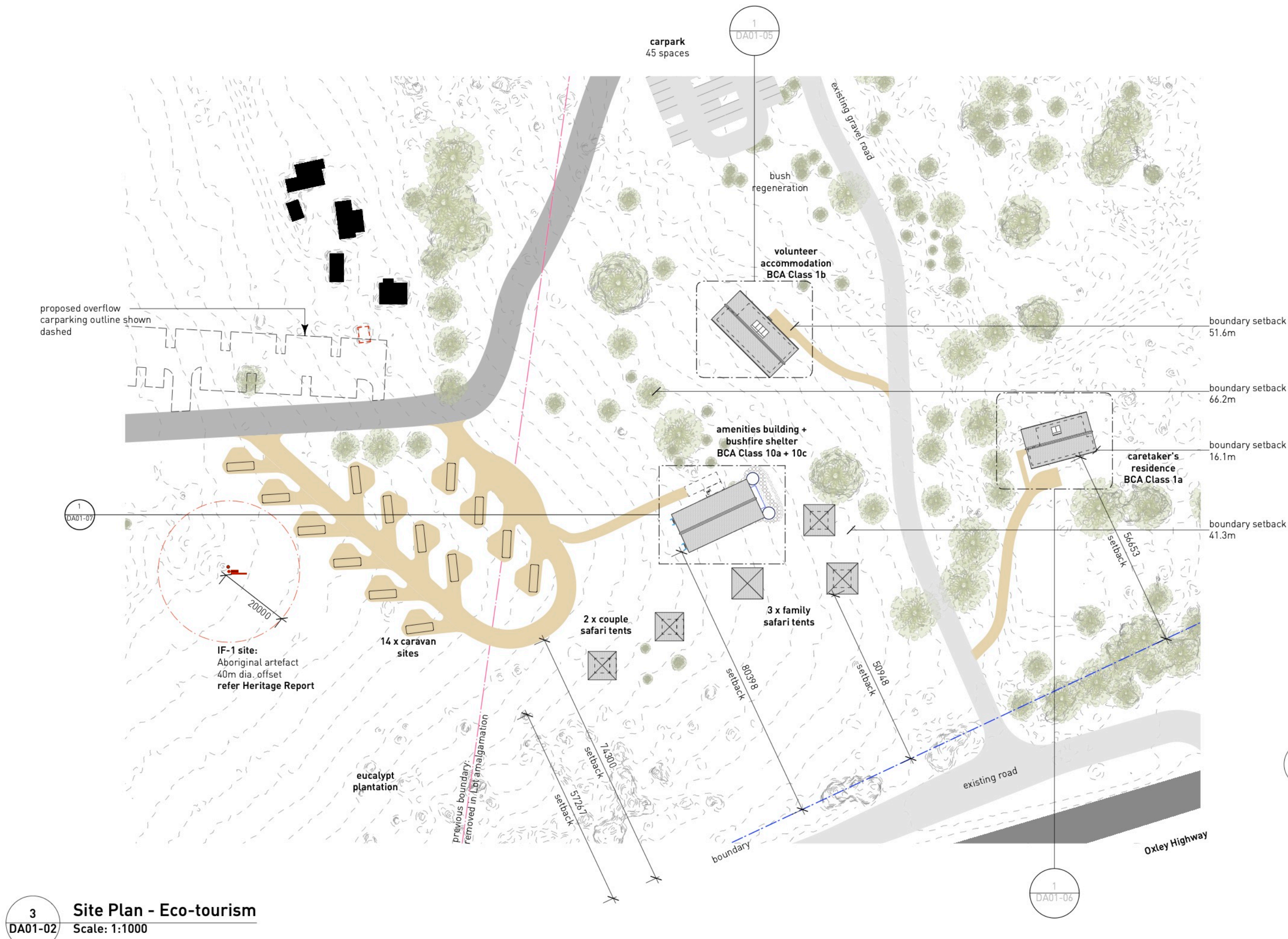
crocodile pool/enclosure (exhibit)
with shade structure
solid Colorbond 'Wallaby' fencing
enclosure to meet Australian
Animal Welfare Standards +
Guidelines
animal enclosures BCA Class 10a

ponds
concrete formed water tanks
refer to Landscape drawings for details

20kw solar photovoltaic system
70 panels at 14 deg.

mini golf
refer to Landscape drawings
prepared by Stewarts Surveys

2 Site Plan - Wildlife Sanctuary
DA01-02 Scale: 1:1000



3 Site Plan - Eco-tourism
DA01-02 Scale: 1:1000

koala enclosures (pre-release)
7 of 36sqm fenced enclosure
solid Colorbond 'Wallaby' fencing
with 6sqm roof shelter
power + water supply
to meet Australian Animal Welfare
Standards + Guidelines
animal enclosures BCA Class 10a

koala enclosures (exhibit) - Class 10a
3 of 36sqm fenced enclosure
solid Colorbond 'Wallaby' fencing
with 6sqm roof shelter
power + water supply
to meet Australian Animal Welfare
Standards + Guidelines
animal enclosures BCA Class 10a

wildlife walking track
refer to Landscape drawings for details
animal enclosures (exhibit) - Class 10a
with shade structure - 15sqm typ.
solid Colorbond 'Wallaby' fencing
enclosures to meet Australian Animal
Welfare Standards + Guidelines
power + water supply
animal enclosures BCA Class 10a

Rev	Date	By	Notes
D	12/5/21	JT	Campervan site adjusted
C	27/11/20	SF	Issue for BASIX
B	13/11/20	SF	Preliminary DA issue to consultants
A	12/11/20	SF	Preliminary DA drawings for client approval

- notes**
1. all dimensions in mm.
 2. do not scale from drawing.
 3. this drawing has been prepared for Development Approval purposes only and is not to be used for tender or construction.
 4. clarification to be sought from the architect in the event of any discrepancies in the documentation or if further information is required.

Consultants

Surveyor -
contact ph:
Structural Engineer -
contact ph:
Civil Engineer -
contact ph:
Quantity Surveyor -
contact ph:
Builder - TBA
contact ph:

DUNN & HILLAM
ARCHITECTS

Workshop 1 Pty Ltd
t/a Dunn & Hillam Architects
ACN 098 209 194 ABN 17 098 209 194
33 Salisbury St, Botany NSW 2019
T +61 2 9316 7715
F +61 2 9316 7725
E studio@dunhillam.com.au
Nominated architect Ashley Dunn NSW ARB No. 7547
This drawing, the information and design
in it are copyright to Workshop 1 Pty Ltd.

Client	Gunnedah Shire Council		
Project	Gunnedah Koala Sanctuary 3130 Oxley Highway, Gunnedah		
Issue	Development Approval		
Date	Wed, 12 May 2021		
Scale	@A1		
Drawing	Site Plans		
Drw No.	DA01-02	Rev	D
Job No.	20_301		
Drawn:	SF	Check:	LH

PRELIMINARY - DA Amendment